

## Technical specifications

### DESCRIPTION

Demountable single or double glazed partition without vertical frames between glass panes. Compatible with String<sup>2</sup> for solid partition and/or doorframes.

### STRUCTURE

- GLAZED ELEMENTS:
  - Thickness: 100 mm
  - 10 and/or 12 mm thick tempered or laminated glass
  - Off-center single glazing or double glazing
- SOLID ELEMENTS:
  - (in combinations with String<sup>2</sup>)
  - Thickness: 100 mm
  - Uprights/Studs: steel sections, 2 x 0,8 mm clinched clamping stud
  - Panels: Steel, galvanized, 0,8 mm on 12,5 mm plasterboard backing
  - 18 mm melamine finished particleboard panels
  - 18 mm veneer finished particleboard panels
  - Fabric covered steel or particleboard panels
  - Internal filling: mineral wool
  - Floor and ceiling U-channels: 1,5 mm galvanized steel sections
- DOOR ELEMENTS:
  - Doorframe: aluminium or steel frames provided with 3 hinges
  - Door leaves: Wide range of doors from 40 mm or 100 mm double glazed doors.
  - Check our doors range for further options

### JOINTS

0 mm joint or 5 mm joint for solid modules.  
Glass panels are connected by transparent silicon tape, polythylene terephthalate or polycarbonate sections. Glass panels also available with convex/concave worked edges.

### FINISHES

- SURFACE TREATMENT: for all visible metal parts: environmental friendly epoxy powder coating approx. 80µ thickness.
- COLOURS: according to Maars colour chart. Other colours possible after consultation.
- GLAZING: a variety of options is available, such as sandblasting, film, painted glass. Other manifestations possible after consultation.

### STANDARD DIMENSIONS

- Height: 3100 mm
- Width: solid panels 900/1200 mm, glass 900/1200 mm  
Other sizes in height or width after consultation.
- Weight: 55/70 kg/m<sup>2</sup>

### INSTALLATION

- TOLERANCES:
  - Floor: +/- 13 mm
  - Ceiling: +/- 13 mm
  - Adjustable floor track for easy adjusting of tolerances
- CONNECTION:
  - All solid elements are connected by using clamping studs, enabling easy installation and easy disassembly.
- INTEGRATION OF ELECTRICAL AND DATA SERVICES
  - Perforated clamping studs provide access for wiring and other services. Demountable panelling provide easy access for installation afterwards.

### CLEANING

Please check our website for our cleaning and maintenance instructions.

### LIVING OPTIONS

Maars offers a wide range of options which can be integrated in our partitioning systems, depending on the type of wall. Ventilation studs, sound panels, cupboards, shelving systems, climate control panels, dynamic lighting, multimedia, panels clad with textile, privacy glass and our wide range of Maars Magnetics. See: [www.maarsmagnetics.com](http://www.maarsmagnetics.com).  
Check the Living Options brochure and [www.maarslivingwalls.com](http://www.maarslivingwalls.com) for more information.

### ACOUSTICS

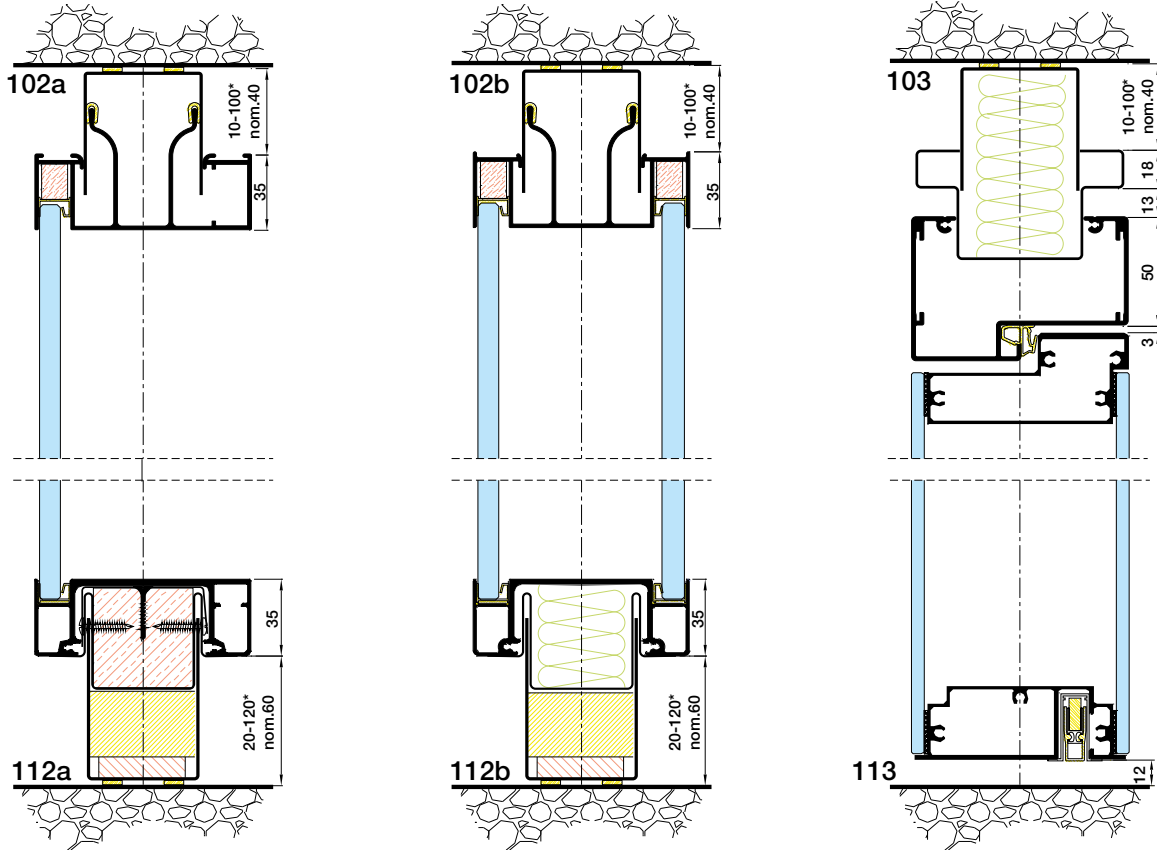
Weighted sound reduction index to EN ISO 717-1

- Glazed panels: From  $R_w (C ; C_{tr}) = 28 (-1 ; -1)$  dB to  $R_w (C ; C_{tr}) = 47 (-2 ; -5)$  dB
- Door, solid: From  $R_w (C ; C_{tr}) = 31 (-2 ; -2)$  dB to  $R_w (C ; C_{tr}) = 37 (-1 ; -4)$  dB
- Door, glazed:  $R_w (C ; C_{tr}) = 39 (0 ; -2)$  dB

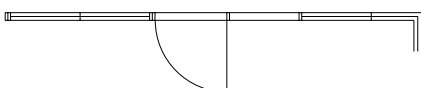
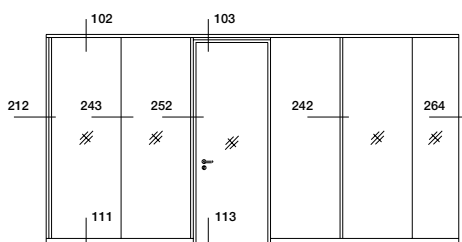
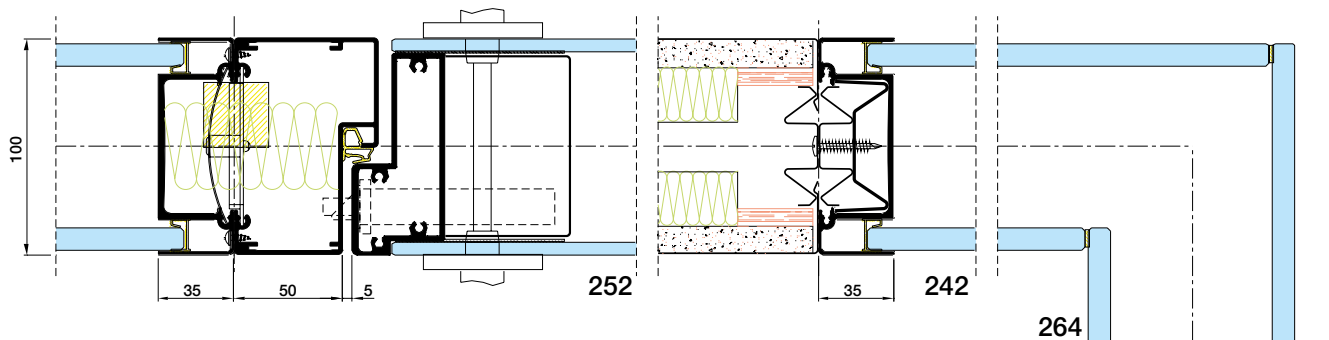
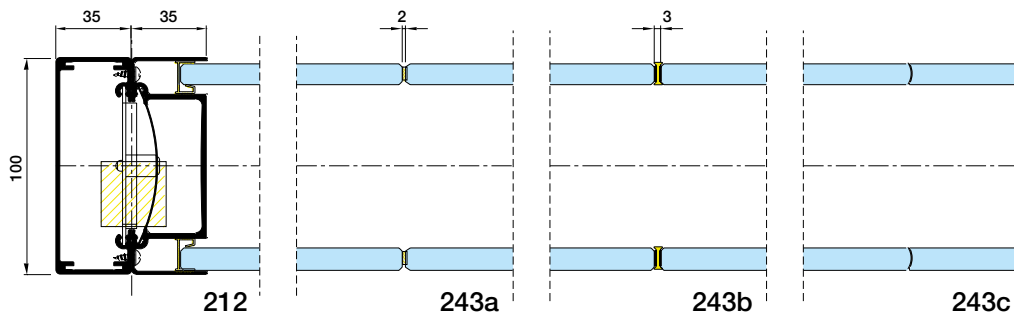
### FIRE

Not applicable.

Due to our policy of constant improvement our products are subject to change. Please check for the latest details: [www.maarslivingwalls.com](http://www.maarslivingwalls.com)



\*Deviations of nominal sizes are optional. Standard tolerance +/- 13 mm on nominal size



## Technical specifications

### DESCRIPTION

Demountable single or double glazed partition without vertical frames between glass panes. Compatible with String<sup>2</sup> for solid partition and/or doorframes.

### STRUCTURE

- GLAZED ELEMENTS:
  - Thickness: 3<sup>15</sup>/<sub>16</sub>"
  - 3/8" and/or 1/2" thick tempered or laminated glass
  - Off-center single glazing or double glazing
- SOLID ELEMENTS:
  - (in combinations with String<sup>2</sup>)
  - Thickness: 3<sup>15</sup>/<sub>16</sub>"
  - Uprights/Studs: steel sections, 2 x 1/16" clinched clamping stud
  - Panels: Steel, galvanized, 1/16" on 1/2" plasterboard backing
  - 11/16" melamine finished particleboard panels
  - 11/16" veneer finished particleboard panels
  - Fabric covered steel or particleboard panels
  - Internal filling: mineral wool
  - Floor and ceiling U-channels: 1/16" galvanized steel sections
- DOOR ELEMENTS:
  - Doorframe: aluminium or steel frames provided with 3 hinges
  - Door leaves: Wide range of doors from 1<sup>9</sup>/<sub>16</sub>" or 3<sup>15</sup>/<sub>16</sub>" double glazed doors.
  - Check our doors range for further options

### JOINTS

Butt joint or 3/16" joint for solid modules.  
Glass panels are connected by transparent silicon tape, polythylene terephthalate or polycarbonate sections. Glass panels also available with convex/concave worked edges.

### FINISHES

- SURFACE TREATMENT: for all visible metal parts: environmental friendly epoxy powder coating approx. 80µ thickness.
- COLOURS: according to Maars colour chart. Other colours possible after consultation.
- GLAZING: a variety of options is available, such as sandblasting, film, painted glass. Other manifestations possible after consultation.

### STANDARD DIMENSIONS

- Height: 10'-2<sup>7</sup>/<sub>16</sub>"
- Width: solid panels 2'-11<sup>7</sup>/<sub>16</sub>" / 3'-11<sup>1</sup>/<sub>4</sub>", glass 2'-11<sup>7</sup>/<sub>16</sub>" / 3'-11<sup>1</sup>/<sub>4</sub>"  
Other sizes in height or width after consultation.
- Weight: 5.11/6.50 kg/sq ft

### INSTALLATION

- TOLERANCES:
  - Floor: +/- 1/2"
  - Ceiling: +/- 1/2"
  - Adjustable floor track for easy adjusting of tolerances
- CONNECTION:
  - All solid elements are connected by using clamping studs, enabling easy installation and easy disassembly.
- INTEGRATION OF ELECTRICAL AND DATA SERVICES
  - Perforated clamping studs provide access for wiring and other services. Demountable panelling provide easy access for installation afterwards.

### CLEANING

Please check our website for our cleaning and maintenance instructions.

### LIVING OPTIONS

Maars offers a wide range of options which can be integrated in our partitioning systems, depending on the type of wall. Ventilation studs, sound panels, cupboards, shelving systems, climate control panels, dynamic lighting, multimedia, panels clad with textile, privacy glass and our wide range of Maars Magnetics. See: [www.maarsmagnetics.com](http://www.maarsmagnetics.com).  
Check the Living Options brochure and [www.maarslivingwalls.com](http://www.maarslivingwalls.com) for more information.

### ACOUSTICS

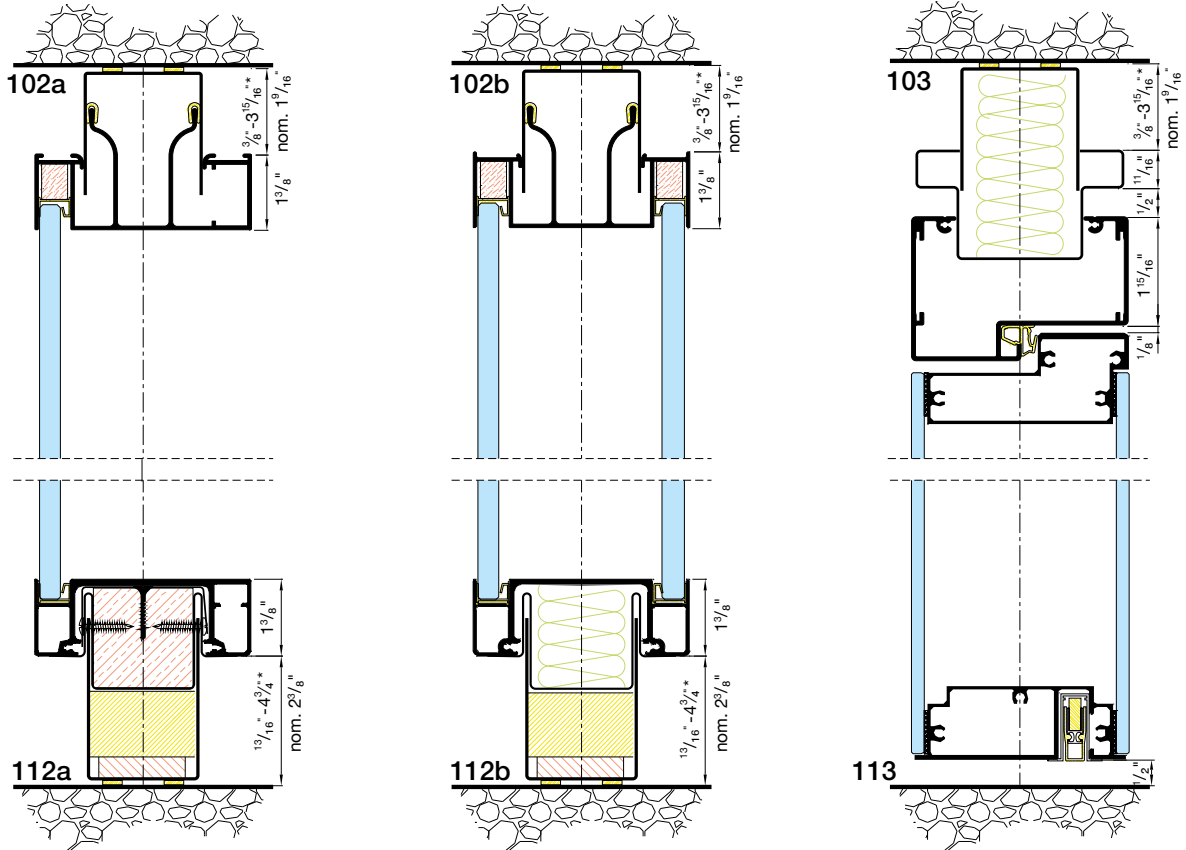
Weighted sound reduction index to ASTM E 413-10

- Glazed panels: From STC = 27 dB to STC = 47 dB
- Door, solid: From STC = 31 dB to STC = 37 dB
- Door, glazed: STC = 39 dB

### FIRE

Not applicable.

Due to our policy of constant improvement our products are subject to change. Please check for the latest details: [www.maarslivingwalls.com](http://www.maarslivingwalls.com)



\*Deviations of nominal sizes are optional. Standard tolerance +/- 1/2" on nominal size

