

## DESCRIPTION

Demountable steel faced partition.

patented "twist and click" connector, enabling easy installation and easy disassembly.

## STRUCTURE

- **SOLID ELEMENTS:**
  - Thickness: 82 mm
  - Uprights/Studs: steel sections, 2 x 0,8 mm clinched clamping stud
  - Panels: steel, galvanized, 0,8 mm on 12,5 mm plasterboard backing
  - Fabric covered steel panels
  - Internal filling: mineral wool
  - Floor and ceiling U-channels: 1,5 mm galvanized steel sections
- **GLAZED ELEMENTS:**
  - Double glazed panels in 4, 6 or 8 mm thickness in aluminium or steel sections
  - Integrated blinds possible
- **DOOR ELEMENTS:**
  - Doorframe: aluminium or steel frames provided with 3 hinges
  - Door leaves: Wide range of doors from 40 mm or 82 mm double glazed doors.  
Check our doors range for further options

## JOINTS

0 mm joint.

## FINISHES

- **SURFACE TREATMENT:** for all visible metal parts: environmental friendly epoxy powder coating approx. 80µ thickness.
- **COLOURS:** according to Maars colour chart. Other colours possible after consultation.
- **GLAZING:** a variety of options is available, such as sandblasting, film, painted glass. Other manifestations possible after consultation.

## STANDARD DIMENSIONS

- Height: 3100 mm
- Width: solid panels 900/1200 mm, glass 900/1200 mm  
Other sizes in height or width after consultation.
- Weight: 35 kg/m<sup>2</sup>, solid

## INSTALLATION

- **TOLERANCES:**
  - Floor: +/- 13 mm
  - Ceiling: +/- 13 mm
  - Adjustable floor track for easy adjusting of tolerances
- **CONNECTION:**  
All elements are connected by using clamping studs; monoblock elements are connected through a

## • INTEGRATION OF ELECTRICAL AND DATA SERVICES

Perforated clamping studs provide access for wiring and other services. Demountable panelling provides easy access for installation afterwards.

## CLEANING

Please check our website for our cleaning and maintenance instructions.

## LIVING OPTIONS

Maars offers a wide range of options which can be integrated in our partitioning systems, depending on the type of wall. Ventilation studs, sound panels, cupboards, shelving systems, climate control panels, dynamic lighting, multimedia, panels clad with textile, privacy glass and our wide range of Maars Magnetics. See: [www.maarsmagnetics.com](http://www.maarsmagnetics.com).

Check the Living Options brochure and [www.maarslivingwalls.com](http://www.maarslivingwalls.com) for more information.

## ACOUSTICS 82 MM

Weighted sound reduction index to EN ISO 717-1

- Solid: From Rw (C ; Ctr)= 45 (-2 ; -6) dB  
to Rw (C ; Ctr)= 48 (-2 ; -7) dB
- Glazed panels: From Rw (C ; Ctr)= 29 (-1 ; -4) dB  
to Rw (C ; Ctr)= 44 (-1 ; -5) dB
- Door, solid: From Rw (C ; Ctr)= 31 (-2 ; -2) dB  
to Rw (C ; Ctr)= 37 (-1 ; -4) dB
- Glazed door: Rw (C ; Ctr)= 30 (0 ; -1) dB

## FIRE 82 MM

Fire resistance to EN 1363-2, EN 1364-1 and EN 1634-1: Equivalent to BS Standards.

- Solid: EI 60
- Glazed: EI 60
- Door: EI 60

## ACOUSTICS 100 MM

Weighted sound reduction index to EN ISO 717-1

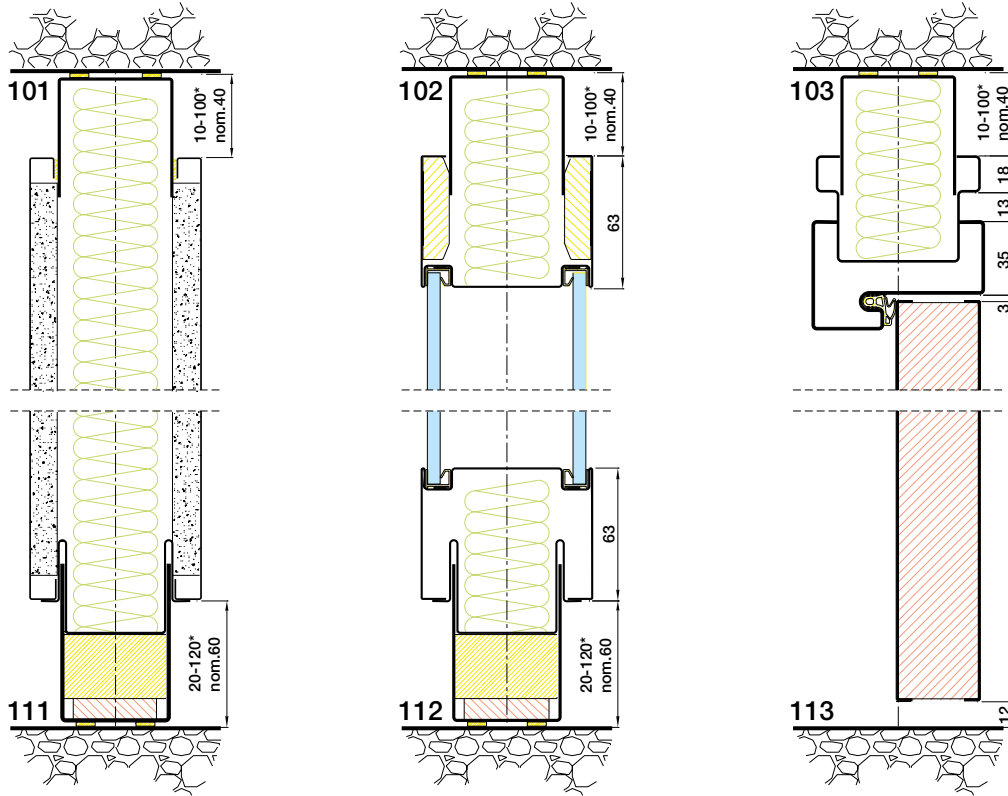
- Solid: From Rw (C ; Ctr)= 50 (-2 ; -7) dB  
to Rw (C ; Ctr)= 53 (-2 ; -6) dB
- Door, solid: From Rw (C ; Ctr)= 31 (-2 ; -2) dB  
to Rw (C ; Ctr)= 37 (-1 ; -4) dB
- Door, glazed: From Rw (C ; Ctr)= 39 (0 ; -2) dB

## FIRE 100 MM

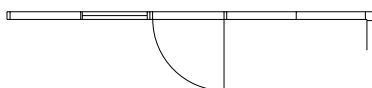
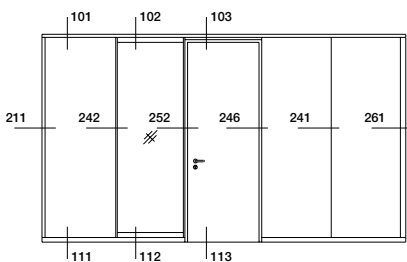
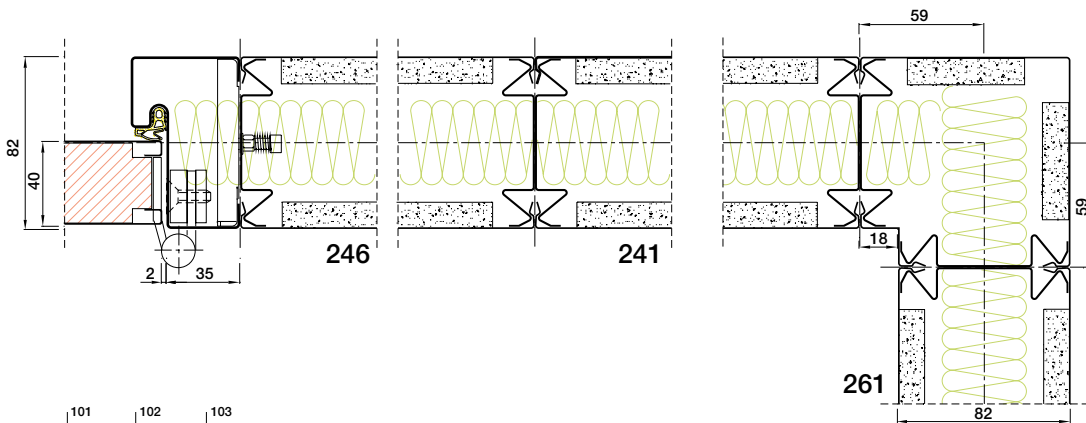
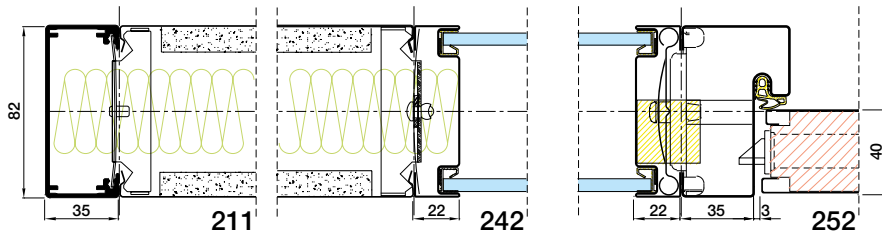
Fire resistance to EN 1363-2 and EN 1364-1  
Equivalent to BS Standards.

- Solid: EI 60, EI 120

Due to our policy of constant improvement our products are subject to change. Please check for the latest details: [www.maarslivingwalls.com](http://www.maarslivingwalls.com)



\*Deviations of nominal sizes are optional. Standard tolerance +/- 13 mm on nominal size



## Technical specifications

### DESCRIPTION

Demountable steel faced partition.

patented "twist and click" connector, enabling easy installation and easy disassembly.

### STRUCTURE

- **SOLID ELEMENTS:**
  - Thickness: 3<sup>1</sup>/<sub>4</sub>"
  - Uprights/Studs: steel sections, 2 x 1<sup>1</sup>/<sub>16</sub>" clinched clamping stud
  - Panels: steel, galvanized, 1<sup>1</sup>/<sub>16</sub>" on 1<sup>1</sup>/<sub>2</sub>" plasterboard backing
  - Fabric covered steel panels
  - Internal filling: mineral wool
  - Floor and ceiling U-channels: 1<sup>1</sup>/<sub>16</sub>" galvanized steel sections
- **GLAZED ELEMENTS:**
  - Double glazed panels in 3<sup>9</sup>/<sub>16</sub>", 1<sup>1</sup>/<sub>4</sub>" or 5<sup>5</sup>/<sub>16</sub>" thickness in aluminium or steel sections
  - Integrated blinds possible
- **DOOR ELEMENTS:**
  - Doorframe: aluminium or steel frames provided with 3 hinges
  - Door leaves: Wide range of doors from 1<sup>9</sup>/<sub>16</sub>" or 3<sup>1</sup>/<sub>4</sub>" double glazed doors.

Check our doors range for further options

### JOINTS

Butt joint.

### FINISHES

- **SURFACE TREATMENT:** for all visible metal parts: environmental friendly epoxy powder coating approx. 80µ thickness.
- **COLOURS:** according to Maars colour chart. Other colours possible after consultation.
- **GLAZING:** a variety of options is available, such as sandblasting, film, painted glass. Other manifestations possible after consultation.

### STANDARD DIMENSIONS

- Height: 10'2<sup>1</sup>/<sub>16</sub>"
- Width: solid panels 2'-11<sup>7</sup>/<sub>16</sub>" / 3'-11<sup>1</sup>/<sub>4</sub>", glass 2'-11<sup>7</sup>/<sub>16</sub>" / 3'-11<sup>1</sup>/<sub>4</sub>"
- Other sizes in height or width after consultation.
- Weight: 3.25 kg/sq ft, solid

### INSTALLATION

- **TOLERANCES:**
  - Floor: +/- 1<sup>1</sup>/<sub>2</sub>"
  - Ceiling: +/- 1<sup>1</sup>/<sub>2</sub>"
  - Adjustable floor track for easy adjusting of tolerances
- **CONNECTION:**

All elements are connected by using clamping studs; monoblock elements are connected through a

### • INTEGRATION OF ELECTRICAL AND DATA SERVICES

Perforated clamping studs provide access for wiring and other services. Demountable panelling provides easy access for installation afterwards.

### CLEANING

Please check our website for our cleaning and maintenance instructions.

### LIVING OPTIONS

Maars offers a wide range of options which can be integrated in our partitioning systems, depending on the type of wall. Ventilation studs, sound panels, cupboards, shelving systems, climate control panels, dynamic lighting, multimedia, panels clad with textile, privacy glass and our wide range of Maars Magnetics. See: [www.maarsmagnetics.com](http://www.maarsmagnetics.com).

Check the Living Options brochure and [www.maarslivingwalls.com](http://www.maarslivingwalls.com) for more information.

### ACOUSTICS 3<sup>1</sup>/<sub>4</sub>"

Weighted sound reduction index to ASTM E 413-10

- Solid: From STC = 45 dB to STC = 48 dB
- Glazed panels: From STC = 29 dB to STC = 44 dB
- Door, solid: From STC = 31 dB to STC = 37 dB
- Glazed door: Up to STC = 30 dB

### FIRE 3<sup>1</sup>/<sub>4</sub>"

Fire resistance to EN 1363-2, EN 1364-1 and EN 1634-1: Equivalent to BS Standards.

- Solid: EI 60
- Glazed: EI 60
- Door: EI 60

### ACOUSTICS 3<sup>15</sup>/<sub>16</sub>"

Weighted sound reduction index to ASTM E 413-10

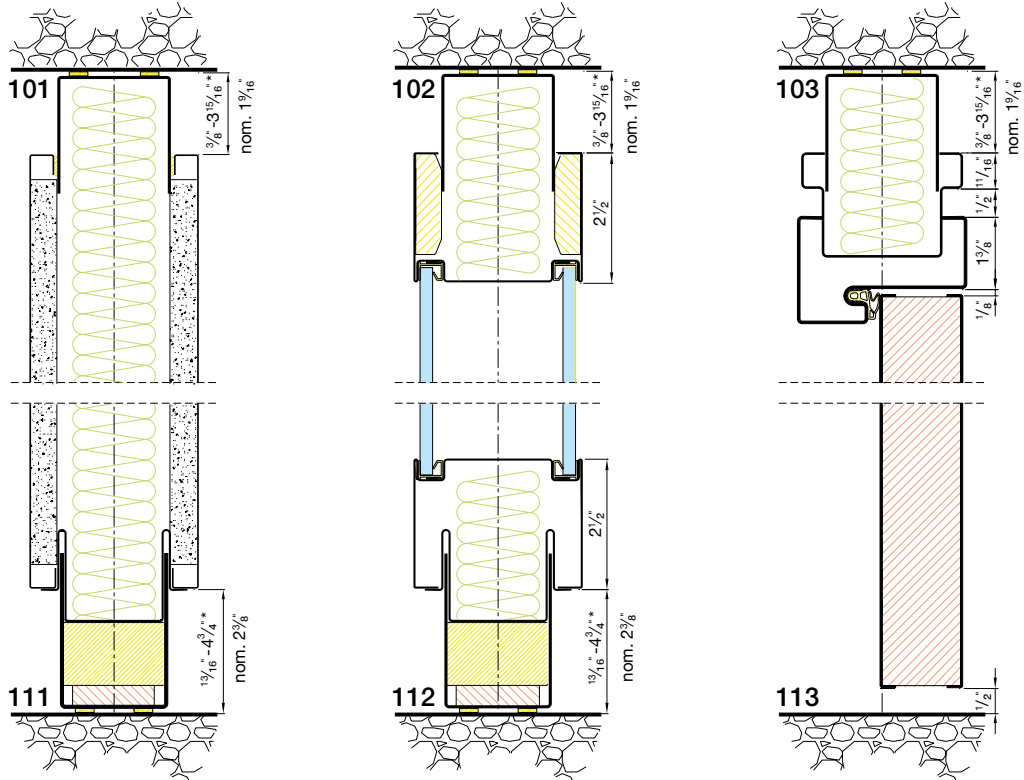
- Solid: From STC = 50 dB to STC = 53 dB
- Door, solid: From STC = 31 dB to STC = 37 dB
- Door, glazed: Up to STC = 39 dB

### FIRE 3<sup>15</sup>/<sub>16</sub>"

Fire resistance to EN 1363-2 and EN 1364-1 Equivalent to BS Standards.

- Solid: EI 60, EI120

Due to our policy of constant improvement our products are subject to change. Please check for the latest details: [www.maarslivingwalls.com](http://www.maarslivingwalls.com)



\*Deviations of nominal sizes are optional. Standard tolerance  $\pm \frac{1}{2}$ " on nominal size

