

maars LIVING WALLS®

الجريد  
AL JURAID



# metaline



LIVING WALLS

Ingenious  
Futuristic  
Surreal

CALL US WHAT YOU LIKE

*'We are no ordinary modular walls. We are alive.*

*We inspire with dynamic colours, we warm you up or give you goose bumps. We change our appearance. We produce the most beautiful sounds. We arouse your imagination and stimulate achievements. Discover us. Hear us. Feel us.'*

At Maars, our fascination with the wonderful influence the environment can have on a person continues to grow. More and more is becoming known about the stimulating effect of the spaces in which people spend their time. Can a hospital room contribute to faster recuperation? Can modular walls generate positivity or improve learning performances at schools? Maars wants to know and experience everything. As such, Maars Living Walls symbolises a wealth of opportunities which the modular walls offer to enable you to feel at one with your environment and get the best out of yourself. This is achieved by smartly integrating acoustics, air, light, sound, colour and images. The use of the latest technologies creates innovative concepts which create a living environment in which you become inspired, perform better and feel safe. For example, Maars has put together a colour pallet for care, the so-called Healing Colours, which have been proven to contribute to recovery. The Maars Living Walls interact with you and create exactly the environment you need. To do so, we look at colour, shape and use of materials, however unusual. Maars follows the latest trends and knows how to make it specifically applicable in its industry.

livingw  
alls



### The success of versatility

Maars has put all its creativity and inventiveness into making optimal use of the versatile qualities of steel. Just how well Maars has succeeded in doing so has been proven amply by the global success of its Metaline steel partition wall range. Metaline distinguishes itself through ingenious construction combined with a sleek and slim design. The patented click system offers unprecedented, quick assembly and unique adaptability. Metaline's versatility lies in its aesthetic finishes as well as the ability to integrate special features and its suitability for the Maars Magnetics range. This range consists of a wide selection of magnetic coat hooks, picture hooks, document holders, name plates and many other smart magnetic solutions. Visit [www.maarsmagnetics.com](http://www.maarsmagnetics.com) for the entire range.

Whatever form or application you require, with Maars Metaline you are assured of excellent fire and soundproofing performance. All these features make this state-of-the-art system a sound economic choice with a good price/performance ratio.

### Timeless elegance

How sleek and smooth do you want to design your interior spaces? Maars Metaline offers aesthetically attractive partition walls without overlaying profiles or undesirable floor and ceiling connections. This makes Metaline highly suitable for vertical lines. Only the finest of seams are visible between the metal panels and slim frames, as the connections are completely concealed. Each individual wall blends harmoniously into the whole, creating a very elegant look. The result is a wall with an aesthetic appeal that makes for a very comfortable space.

Living walls





create

an advanced working space





# combine

aesthetics with efficiency



**No screwing  
but clicking**

Thanks to the patented twist-and-click principle of the Maars Metaline partition wall, significant time savings can be achieved in assembly. All wall, glass and door elements can be quickly and easily assembled into a very stable partition wall. Metaline walls also occupy less space than a standard partition wall, thanks to the special design and slim dimensions. With Maars Metaline you are automatically set up for the greatest possible flexibility in the future. Changing, moving or expanding the system is also simply a matter of twist-and-click.

Living walls

perfection  
of tomorrow





HAVANA

HAMBURG

## Everything for a customised wall

Maars Metaline has been developed to make customised solutions possible for each space. To begin with, the wall elements can be made to size, both in height and width. This gives you a lot of design freedom in terms of dimensions. The same applies to the colours and textures. By applying a durable powder coating the steel panels can be rendered in many colours, in gloss or with a light structured finish. The Metaline elements are easy to combine with steel or aluminium frames.

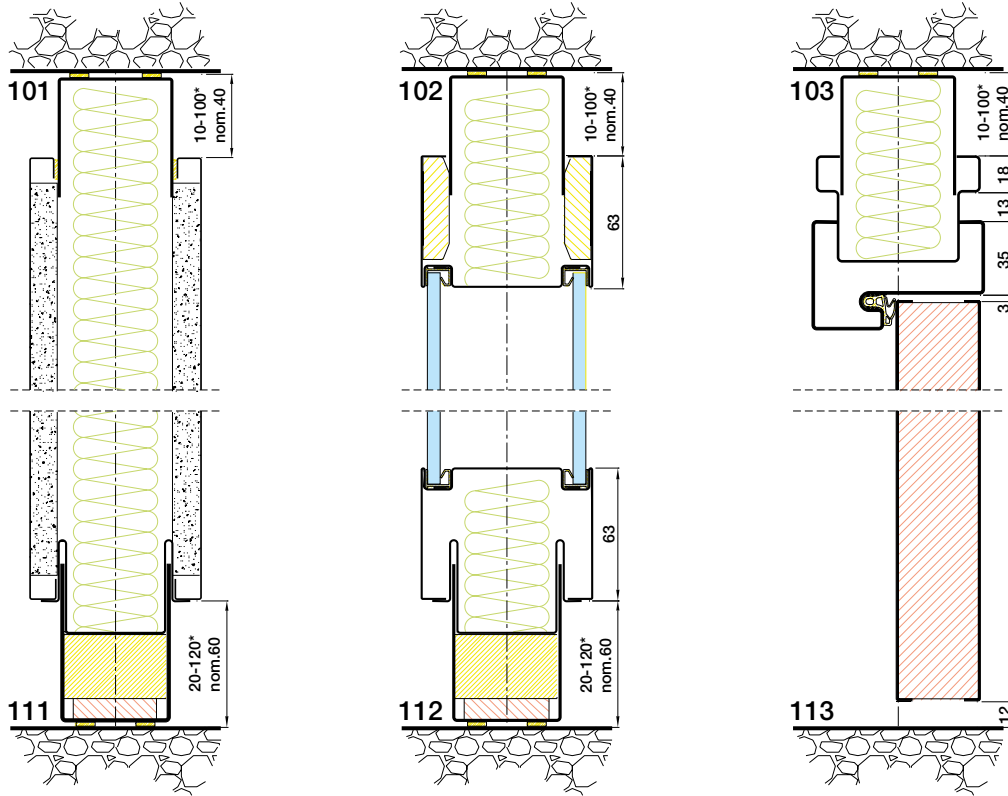
You can choose from a wide selection in the doors range, from functional to high-spec architectural design. Optionally, the doors are available in the exact thickness of the wall for an even sleeker and flush result. Maars can also help you select the right combination of doors and accessories. See our doors brochure for the complete doors range.

The glass elements are available in many variations, from fully transparent to double glazing with integrated blinds. The blinds can be operated manually or electrically and the slats are fitted between the two glass panels. Other variants include panels with blasted glass or switchable privacy glass. Logos or other images and texts can also be applied through film or screen printing.

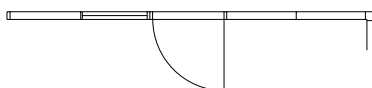
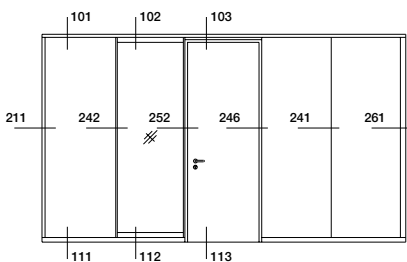
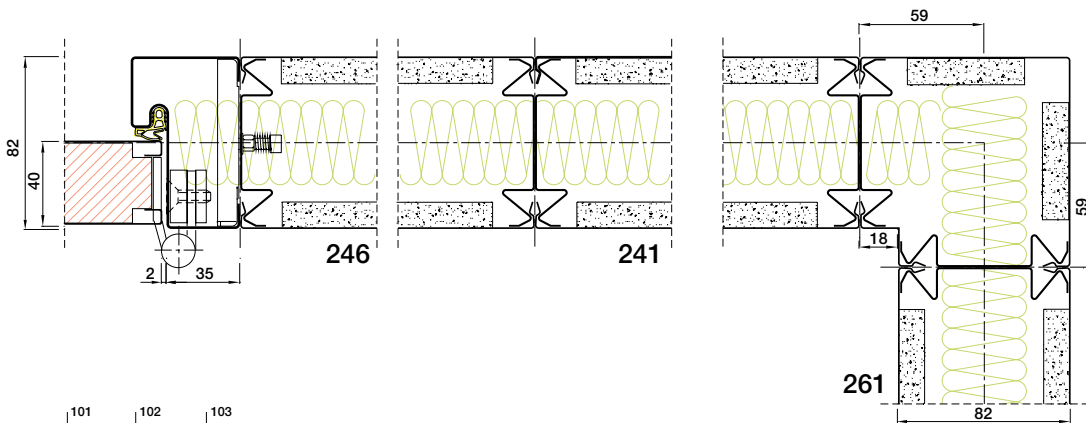
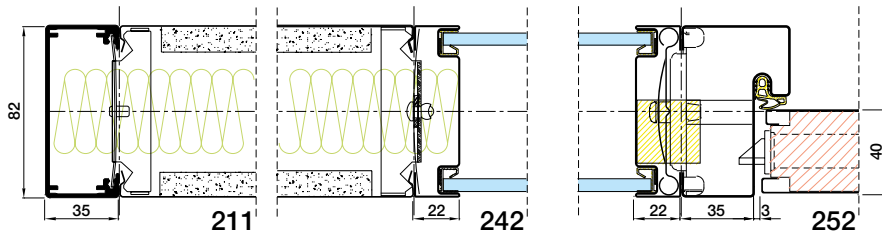
# Living walls







\*Deviations of nominal sizes are optional. Standard tolerance +/- 13 mm on nominal size



## DESCRIPTION

Demountable steel faced partition.

patented "twist and click" connector, enabling easy installation and easy disassembly.

## STRUCTURE

- **SOLID ELEMENTS:**
  - Thickness: 82 mm
  - Uprights/Studs: steel sections, 2 x 0,8 mm clinched clamping stud
  - Panels: steel, galvanized, 0,8 mm on 12,5 mm plasterboard backing
  - Fabric covered steel panels
  - Internal filling: mineral wool
  - Floor and ceiling U-channels: 1,5 mm galvanized steel sections
- **GLAZED ELEMENTS:**
  - Double glazed panels in 4, 6 or 8 mm thickness in aluminium or steel sections
  - Integrated blinds possible
- **DOOR ELEMENTS:**
  - Doorframe: aluminium or steel frames provided with 3 hinges
  - Door leaves: Wide range of doors from 40 mm or 82 mm double glazed doors.  
Check our doors range for further options

## • INTEGRATION OF ELECTRICAL AND DATA SERVICES

Perforated clamping studs provide access for wiring and other services. Demountable panelling provides easy access for installation afterwards.

## CLEANING

Please check our website for our cleaning and maintenance instructions.

## LIVING OPTIONS

Maars offers a wide range of options which can be integrated in our partitioning systems, depending on the type of wall. Ventilation studs, sound panels, cupboards, shelving systems, climate control panels, dynamic lighting, multimedia, panels clad with textile, privacy glass and our wide range of Maars Magnetics. See: [www.maarsmagnetics.com](http://www.maarsmagnetics.com).

Check the Living Options brochure and [www.maarslivingwalls.com](http://www.maarslivingwalls.com) for more information.

## ACOUSTICS 82 MM

Weighted sound reduction index to EN ISO 717-1

- Solid: From  $R_w (C ; Ctr) = 45 (-2 ; -6)$  dB to  $R_w (C ; Ctr) = 48 (-2 ; -7)$  dB
- Glazed panels: From  $R_w (C ; Ctr) = 29 (-1 ; -4)$  dB to  $R_w (C ; Ctr) = 44 (-1 ; -5)$  dB
- Door, solid: From  $R_w (C ; Ctr) = 31 (-2 ; -2)$  dB to  $R_w (C ; Ctr) = 37 (-1 ; -4)$  dB
- Glazed door:  $R_w (C ; Ctr) = 30 (0 ; -1)$  dB

## FIRE 82 MM

Fire resistance to EN 1363-2, EN 1364-1 and EN 1634-1: Equivalent to BS Standards.

- Solid: EI 60
- Glazed: EI 60
- Door: EI 60

## ACOUSTICS 100 MM

Weighted sound reduction index to EN ISO 717-1

- Solid: From  $R_w (C ; Ctr) = 50 (-2 ; -7)$  dB to  $R_w (C ; Ctr) = 53 (-2 ; -6)$  dB
- Door, solid: From  $R_w (C ; Ctr) = 31 (-2 ; -2)$  dB to  $R_w (C ; Ctr) = 37 (-1 ; -4)$  dB
- Door, glazed: From  $R_w (C ; Ctr) = 39 (0 ; -2)$  dB

## FIRE 100 MM

Fire resistance to EN 1363-2 and EN 1364-1 Equivalent to BS Standards.

- Solid: EI 60, EI 120

Due to our policy of constant improvement our products are subject to change. Please check for the latest details: [www.maarslivingwalls.com](http://www.maarslivingwalls.com)

## JOINTS

0 mm joint.

## FINISHES

- **SURFACE TREATMENT:** for all visible metal parts: environmental friendly epoxy powder coating approx. 80µ thickness.
- **COLOURS:** according to Maars colour chart. Other colours possible after consultation.
- **GLAZING:** a variety of options is available, such as sandblasting, film, painted glass. Other manifestations possible after consultation.

## STANDARD DIMENSIONS

- Height: 3100 mm
- Width: solid panels 900/1200 mm, glass 900/1200 mm  
Other sizes in height or width after consultation.
- Weight: 35 kg/m<sup>2</sup>, solid

## INSTALLATION

- **TOLERANCES:**
  - Floor: +/- 13 mm
  - Ceiling: +/- 13 mm
  - Adjustable floor track for easy adjusting of tolerances
- **CONNECTION:**  
All elements are connected by using clamping studs; monoblock elements are connected through a





## BESCHREIBUNG

Demontierbare, mit Stahl verkleidete Trennwand.

## STRUKTUR

- **MASSIVE ELEMENTE:**
  - Stärke: 82 mm
  - Stützen/Ständer: Stahlprofile, 2 x 0,8 mm gestauchte Spannschraube
  - Oberflächen: Stahl, verzinkt, 0,8 mm auf 12,5 mm Rückwand aus Gipskarton
  - Stoffbezogene Stahlpaneele
  - Innerer Füllstoff: Mineralwolle
  - Boden- und Decken- U-Profile: 1,5 mm verzinkte Stahlprofile
- **VERGLASTE ELEMENTE:**
  - Doppelverglaste Paneele in 4, 6 oder 8 mm Stärke in Aluminiumprofilen oder Stahlprofilen
  - Integrierte Jalousien möglich
- **TÜRELEMENTE:**
  - Türrahmen: Aluminium oder Stahl, Rahmen mit 3 Bändern
  - Türblätter: Breites Sortiment Türen, von 40 mm bis 82 mm.Weitere Optionen finden Sie in unserem Türenprogramm

## FUGEN

Nullfuge

## FINISHES

- **OBERFLÄCHENBEHANDLUNG:** Bei allen sichtbaren Metallteilen: Umweltfreundliche Epoxidpulverbeschichtung, etwa 80 µ Dicke.
- **FARBEN:** Nach der Maars Farbtafel. Weitere Farben nach Absprache.
- **VERGLASUNG:** Eine Vielzahl von Optionen steht zur Auswahl, zum Beispiel Sandstrahlen, Folie, lackiertes Glas. Weitere Gestaltungsformen nach Absprache.

## STANDARD ABMESSUNGEN

- Höhe: 3100 mm
- Breite: Massive Elemente 900/1200 mm, Verglaste Elementen 900/1200 mm  
Andere Größen in Höhe oder Breite nach Rücksprache.
- Gewicht: 35 kg/m<sup>2</sup>, massiv

## INSTALLATION

- **TOLERANZEN:**
  - Boden: +/- 13 mm
  - Decke: +/- 13 mm
  - Verstellbare Bodenschiene zur einfachen Adaption von Toleranzen
- **VERBINDUNG:**  
Alle Elemente werden mit Spannschrauben verbunden, Monoblock-Elemente durch das patentierte

“Twist and Click“- System, das eine einfache Installation und späteren problemlosen Zugang ermöglicht.

## • INTEGRIERTE STROMVERSORGUNG UND DATENÜBERTRAGUNG

In die Perforierte Stützen kann man die Verkabelung aufnehmen und das ist leicht ausführbar weil wir demontable Paneele verwenden.

## REINIGUNG

Für Reinigungs- und Pflegehinweise ziehen Sie bitte unsere Website zu Rate.

## LIVING OPTIONS

Maars bietet eine Vielzahl von Optionen, die je nach Wandtyp in unsere Trennwandsysteme integrierbar sind. Lüftungsstege, Schallschutzpaneele, Schränke, Regalsysteme, Klimatisierungspaneele, dynamische Beleuchtung, Multimedia, mit Textilien verkleidete Paneele, Privacy-Glas und unser umfangreiches Maars Magnetics Programm. Siehe unter: [www.maarsmagnetics.com](http://www.maarsmagnetics.com). Weitere Informationen in der Living Options-Broschüre und unter [www.maarslivingwalls.com](http://www.maarslivingwalls.com).

## AKUSTIK 82 MM

Bewertetes Schalldämmmaß nach DIN EN ISO 717-1

- Vollwand: Ab  $R_w(C; Ctr) = 45(-2; -6)$  dB bis  $R_w(C; Ctr) = 48(-2; -7)$  dB
- Verglaste Paneele: Ab  $R_w(C; Ctr) = 29(-1; -4)$  dB bis  $R_w(C; Ctr) = 44(-1; -5)$  dB
- Tür, Voll: Ab  $R_w(C; Ctr) = 31(-2; -2)$  dB bis  $R_w(C; Ctr) = 37(-1; -4)$  dB
- Tür, verglast:  $R_w(C; Ctr) = 30(0; -1)$  dB

## FEUERWIDERSTAND 82 MM

Feuerwiderstand nach DIN EN 1363-2, DIN EN 1364-1 und DIN EN 1634-1.

- Vollwand: EI 60
- Verglast: EI 60
- Tür: EI 60

## AKUSTIK 100 MM

Bewertetes Schalldämmmaß nach DIN EN ISO 717-1

- Vollwand: Ab  $R_w(C; Ctr) = 50(-2; -7)$  dB bis  $R_w(C; Ctr) = 53(-2; -6)$  dB
- Tür, Voll: Ab  $R_w(C; Ctr) = 31(-2; -2)$  dB bis  $R_w(C; Ctr) = 37(-1; -4)$  dB
- Tür, verglast: Ab  $R_w(C; Ctr) = 39(0; -2)$  dB

## FEUERWIDERSTAND 100 MM

Feuerwiderstand nach DIN EN 1363-2 und DIN EN 1364-1.

- Vollwand: EI 60, EI 120

Wir streben nach kontinuierlicher Verbesserung unserer Produkte. Daher können diese Veränderungen unterliegen. Die aktuellsten Details finden Sie unter: [www.maarslivingwalls.com](http://www.maarslivingwalls.com)

## DESCRIPTION

Partitionnement démontable avec panneaux en acier.

## STRUCTURE

- **ÉLÉMENTS SOLIDES:**
  - Épaisseur: 82 mm
  - Montants / Supports: sections en acier, 2 x 0,8 mm crampon de serrage
  - Panneaux en acier galvanisé, 0,8 mm, collée sur une plaque de plâtre de 12,5 mm
  - Panneaux en acier recouverts de tissu
  - Rembourrage intérieur: laine minérale
  - Passages sol et plafond en U forme: sections acier galvanisé de 1,5 mm

- **ÉLÉMENTS VITRÉS:**
  - Panneaux double vitrage d'une épaisseur de 4, 6 ou 8 mm dans les sections en aluminium ou dans les sections monobloc en acier avec rainures
  - Possibilité d'intégration de stores dans les éléments vitrés

- **ÉLÉMENTS DE PORTE:**
  - Châssis: châssis en aluminium ou en acier avec 3 charnières
  - Modèles de portes: Choix allant de portes de 40 mm ou 82 mm recouvertes avec des feuilles en acier aux portes avec double vitrage jusqu'à 82 mm. Découvrez notre programme de portes pour voir les autres possibilités

## JOINTS

Jointure 0 mm.

## FINITIONS

- **TRAITEMENT DE LA SURFACE:** pour toutes les parties métalliques visibles: couche de poudre epoxy, épaisseur +/- 80µ.
- **COULEURS:** en fonction du nuancier de Maars. Toutes autres couleurs sur consultation
- **VITRAGE:** une variété d'options est disponible, par exemple le pistolage au sable, une pellicule, des vitres peintes. Toutes autres variantes sur consultation.

## STANDARD DIMENSIONS

- Hauteur: 3100 mm
- Largeur: panneaux solides 900/1200 mm, éléments vitrés 900/1200 mm. Autre dimensions in hauteur ou largeur sur consultation
- Poids: 35 kg/m<sup>2</sup>, pour les éléments solides

## INSTALLATION

- **TOLÉRANCES:**
  - Sol: +/- 13 mm
  - Plafond: +/- 13 mm
  - Chenille au sol réglable pour une adaptation aisée des tolérances

- **CONNEXION:**

Tous les éléments sont reliés au moyen de tenons et montant de serrage; les éléments monobloc

sont reliés via un connecteur « tournez et cliquez » breveté, permettant une installation simple et un accès aisé après l'installation.

## • INTÉGRATION DE SERVICES ÉLECTRIQUES ET DE DONNÉES

Les serrages perforés permettent le passage de câbles et autres. Les panneaux métalliques offrent un accès aisé pour des installations ultérieures.

## ENTRETIEN

Prenez connaissance de notre site internet pour l'entretien et la maintenance.

## LIVING OPTIONS

Maars offre une gamme d'options qui peuvent être intégrées dans nos systèmes de compartimentage, en fonction du type de mur. Des tenons de ventilation, des panneaux d'insonorisation, des placards, des systèmes d'étagères, des tableaux de contrôle de la climatisation, un éclairage dynamique, multimedia, des panneaux recouverts de tissu, des vitrages fermés, et notre gamme de Maars magnétiques. Allez sur le site: [www.maarsmagnetics.com](http://www.maarsmagnetics.com). Découvrez la brochure Living Options sur le site [www.maarslivingwalls.com](http://www.maarslivingwalls.com)

## ACOUSTIQUE 82 MM

Indice pour l'évaluation de la réduction sonore selon les normes EN ISO 717-1

- Plein: De Rw (C ; Ctr)= 45 (-2 ; -6) dB  
à Rw (C ; Ctr)= 48 (-2 ; -7) dB
- Panneaux vitrés: De Rw (C ; Ctr)= 29 (-1 ; -4) dB  
à Rw (C ; Ctr)= 44 (-1 ; -5) dB
- Porte plein: De Rw (C ; Ctr)= 31 (-2 ; -2) dB  
à Rw (C ; Ctr)= 37 (-1 ; -4) dB
- Porte vitrée: Rw (C ; Ctr)= 30 (0 ; -1) dB

## FEU 82 MM

Résistance au feu selon les normes EN 1363-2, EN 1364-1 et EN 1634-1. Équivalent aux normes BS.

- Plein: EI 60
- Vitrage: EI 60
- Porte: EI 60

## ACOUSTIQUE 100 MM

Indice pour l'évaluation de la réduction sonore selon les normes EN ISO 717-1

- Plein: De Rw (C ; Ctr)= 50 (-2 ; -7) dB  
à Rw (C ; Ctr)= 53 (-2 ; -6) dB
- Porte plein: De Rw (C ; Ctr)= 31 (-2 ; -2) dB  
à Rw (C ; Ctr)= 37 (-1 ; -4) dB
- Porte vitrée: De Rw (C ; Ctr)= 39 (0 ; -2) dB

## FEU 100 MM

Résistance au feu selon les normes EN 1363-2 et EN 1364-1. Équivalent aux normes BS.

- Plein: EI 60, E120

Notre politique vise à améliorer sans cesse nos produits, ils sont susceptibles de changer. Pour les tous derniers détails, veuillez consulter le site: [www.maarslivingwalls.com](http://www.maarslivingwalls.com)

## OMSCHRIJVING

Demonteerbare systeemwand met stalen panelen.

## CONSTRUCTIE

- **GESLOTEN ELEMENTEN:**
  - Wanddikte: 82 mm
  - Stijlen: 2 x 0,8 mm dikke geklonken klemstijlen
  - Panelen: staal, gegalvaniseerd, 0,8 mm dik op 12,5 mm dikke gipsplaten
  - Met stof beklede stalen panelen
  - Vulling: steenwol
  - U-profielen op de vloer en het plafond: 1,5 mm dikke gegalvaniseerd stalen delen
- **BEGLAASDE ELEMENTEN:**
  - Elementen met dubbele beglazing van 4, 6 of 8 mm in aluminium of stalen profielen gevat
  - Optioneel: geïntegreerde jaloezieën
- **DEURELEMENTEN:**
  - Deurkozijn: aluminium of staal v.v. 3 scharnieren
  - Deuren: breed assortiment van 40 mm of 82 mm dikke deuren.  
Bekijk ons deurenprogramma voor de mogelijkheden

## VERBINDINGEN

0 mm voeg.

## AFWERKING

- **OPPERVLAKTEBEHANDELING:** voor alle zichtbare metalen delen: milieuvriendelijke epoxy poedercoating, ca. 80µ dik.
- **KLEUREN** op basis van de Maars kleurenkaart. Andere kleuren in overleg.
- **BEGLAZING:** meerdere opties mogelijk, zoals zandstralen, gecoat of met folie. Andere vormen in overleg.

## STANDAARD AFMETINGEN

- Hoogte: 3100 mm
- Breedte: gesloten panelen 900/1200 mm, glas 900/1200 mm  
Afwijkende maten in hoogte en breedte in overleg.
- Gewicht: 35 kg/m<sup>2</sup>, gesloten elementen

## INSTALLATIE

- **MARGES:**
  - Vloer: +/- 13 mm
  - Plafond: +/- 13 mm
  - Verstelbare vloerplint waardoor verschillen in de hoogte makkelijk zijn op te vangen
- **VERBINDING:**  
Alle gesloten elementen zijn verbonden door stijlen; beglaasde elementen zijn verbonden met een gepatenteerde "twist and click" verbinding, waardoor de wand makkelijk te monteren is.

- **INTEGRATIE VAN ELEKTRICITEITS- EN DATAKABELS**

Geperforeerde klemstijlen bieden de mogelijkheid om bedrading op te nemen in de wand.

Demontabele panelen maken de wand goed toegankelijk voor wijzigingen achteraf.

## ONDERHOUD

Raadpleeg onze website voor schoonmaak- en onderhoudsinstructies.

## LIVING OPTIONS

Maars biedt een breed scala aan opties die, afhankelijk van het wandtype, in ons wandstelsel geïntegreerd kunnen worden. Ventilatiestijlen, geluidspanelen, kasten, plankendragers, panelen met klimaatcontrole, dynamic light, multimedia, met stof beklede panelen, privacyglas of Maars Magnetics.

Zie: [www.maarsmagnetics.com](http://www.maarsmagnetics.com).

Bekijk de 'Living Options' brochure en

[www.maarslivingwalls.com](http://www.maarslivingwalls.com) voor meer informatie.

## GELUID 82 MM

Gewogen geluidsisolatie-index voldoet aan EN ISO 717-1

- Gesloten panelen: Van  $R_w (C ; C_{tr}) = 45 (-2 ; -6)$  dB naar  $R_w (C ; C_{tr}) = 48 (-2 ; -7)$  dB
- Beglaasde panelen: Van  $R_w (C ; C_{tr}) = 29 (-1 ; -4)$  dB naar  $R_w (C ; C_{tr}) = 44 (-1 ; -5)$  dB
- Deur, gesloten: Van  $R_w (C ; C_{tr}) = 31 (-2 ; -2)$  dB naar  $R_w (C ; C_{tr}) = 37 (-1 ; -4)$  dB
- Beglaasde deur:  $R_w (C ; C_{tr}) = 30 (0 ; -1)$  dB

## BRAND 82 MM

Brandwerendheid voldoet aan EN 1363-2, EN 1364-1 en EN 1634-1.

- Gesloten: EI 60
- Beglaasd: EI 60
- Deur: EI 60

## GELUID 100 MM

Gewogen geluidsisolatie-index voldoet aan EN ISO 717-1

- Gesloten panelen: Van  $R_w (C ; C_{tr}) = 50 (-2 ; -7)$  dB naar  $R_w (C ; C_{tr}) = 53 (-2 ; -6)$  dB
- Deur, gesloten: Van  $R_w (C ; C_{tr}) = 31 (-2 ; -2)$  dB naar  $R_w (C ; C_{tr}) = 37 (-1 ; -4)$  dB
- Deur, beglaasd: Van  $R_w (C ; C_{tr}) = 39 (0 ; -2)$  dB

## BRAND 100 MM

Brandwerendheid voldoet aan EN 1363-2 en EN 1364-1.

Gesloten: EI 60, EI 120

Omdat wij onszelf continu verbeteren, veranderen onze producten voortdurend. Kijk voor de meest recente details op: [www.maarslivingwalls.com](http://www.maarslivingwalls.com)





**Thinking of tomorrow**

*'I generate a wonderful space. I am sustainable. I am built from beautiful, natural products. I will be reused in the future. A strange thought. I feel good, because I am put together well.'*

The welfare of people in any space is central to Maars. That includes public space. As such, Maars is constantly looking for sustainable and responsible solutions. New production techniques are not avoided, rather they are sought out and studied. Reducing, reusing and recycling has become deeply rooted within the philosophy of the company. Maars knows that things always can and always must be done better. For instance, we have made enormous progress with environmentally-friendly coatings, CO2-compensation and 5S, 'lean manufacturing'. Maars can also contribute to a higher BREEAM and LEED score. In order to be able to fully control our own quality, environmental and health & safety policy, Maars has set up an integrated operational management system within which all critical processes in terms of quality, environment and safety are assured.

This approach has won broad recognition and Maars is ISO-9001, ISO-14001 certified. By scrutinising the entire production process, we are now able to produce more efficiently and continue to reduce energy consumption. A notable example is the fact that our process water is purified 'in house'.

Living  
alls

Reduce  
Reuse  
Recycle





Newtonweg 1, PO Box 1000  
3840 BA Harderwijk  
The Netherlands

T +31 (0)341 46 52 11  
F +31 (0)341 46 53 46  
info@maars.nl  
www.maarslivingwalls.com

