



maars LIVING WALLS®

M923.™

the wall is yours

maarslivingwalls.com



Welcome to the world of Maars! Established in 1946, Maars is currently global market leader in modular wall solutions, supported by our dedicated employees. We offer the most innovative integrated wall solutions for markets such as healthcare, offices, airports, education, hospitality, industry and retail.

Ongoing product development and specialization is based on growing insights and worldwide collaborations with dealer partners, customers and architects. The result: a wide range of solutions spanning basic to high-end design, that meet certified fire ratings and acoustic performance benchmarks.

Maars Living Walls shows how our solutions enable you to be one with your environment, thanks to smart integration of all the latest technologies, materials and functions. Get inspired – discover more about Maars, our solutions and global capabilities in this brochure.

■ [maarslivingwalls.com](http://maarslivingwalls.com)

M923.



“ The whole point of an open office is to keep it open. But a truly open office comes with a high price. Workers get distracted, the space can seem cavernous and impersonal, and the workplace becomes a fishbowl. In our new normal, the open space also can make people feel uncomfortable, even unsafe. Striking a balance is a difficult task. M923. rises to the challenge. ”



# the wall is yours

like never before

# transform

Consisting of interlocking profiles with snap-in-place panels, and fully relocatable, M923. truly is a "living wall." It defines open areas with the right type of functionality – and the right balance of porosity and privacy – for the task and tenant at hand. And it's always attractive, no matter the configuration.



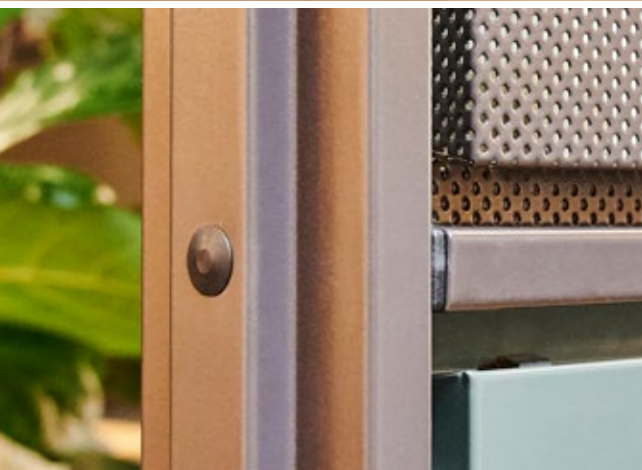
style it



fix it



flip it



# features and benefits

- Designed for ergonomics
- Durable and environmentally friendly
- More privacy and less distraction
- You design the looks and layout yourself
- Free-standing solution
- An affordable option for improving or repurposing space

# flexible

variety of heights

multipurpose panels

easily movable

quick and easy to use and adjust

porosity

numerous colors, finishes and materials

# combine



M923.

11/20

Fits in every interior environment

Carré and Horizon



M923.



In our new reality, physical boundaries are key. M923. lets you quickly create boundaries between walkways and working team members. You also can divide open areas into smaller zones and even into individual workspaces. The wall can be used to separate spaces beyond the open office – including between tables at restaurants, in lobbies and hotel registration desks, at airports, in stores and schools and more. M923. offers easy customization and personalization as well as a sense of privacy and security, both now and moving forward.

enabling focus and safety

# supporting collaboration

Acoustic privacy has become paramount in the open-office environment. A variety of M923. panels let you easily improve acoustic privacy without investing in difficult-to-maintain products or entirely modifying your space.

Visual distractions have increased with the open office. M923. lets you adjust the visual boundaries in your office as your teams morph and space needs change. Height boundaries also can add to the sense of safety. With flexible options for higher and lower boundaries – even a combination of high, medium and low walls – M923. immediately adapts.

Free-standing solution



# ambiance



Users and architects can discover the possibilities of M923. with an augmented reality app available on the App Store and on Google Play. The AR app allows the customized wall, with all available panels, to be placed virtually in a room. The specified wall with accessories then can be easily forwarded to order.

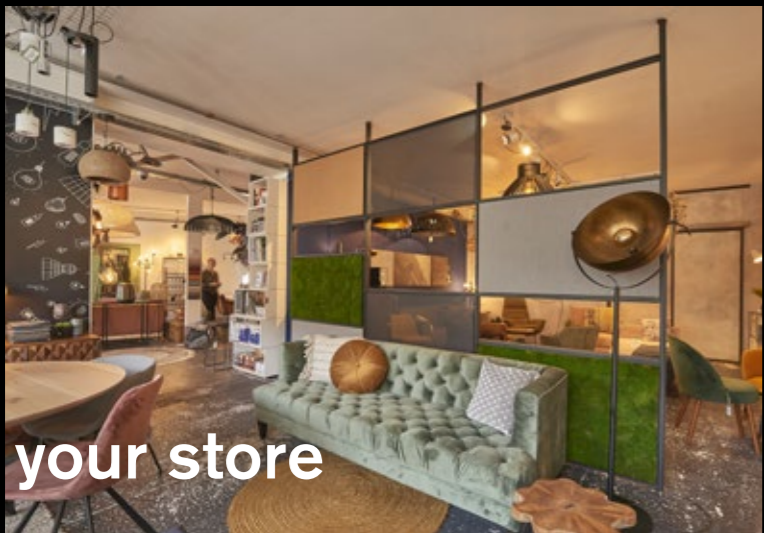
for your office



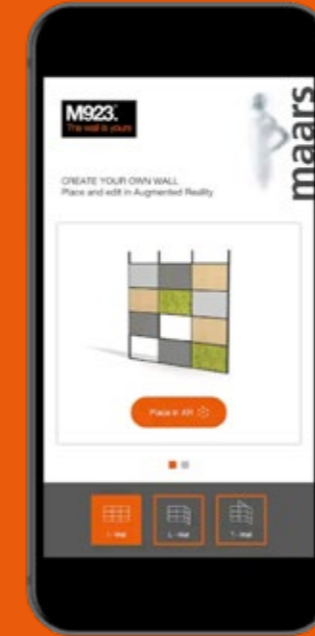
for your restaurant



for your store



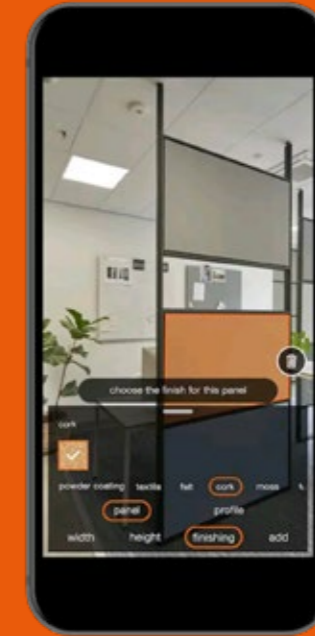
Maars' ongoing commitment to innovation and circularity has been recognised with a Cradle to Cradle™ Bronze certificate\* for all our wall systems and ISO-9001 / ISO-14001 certification.



Explore the possibilities of the walls



Place the wall in your space



Adjust sizes and profiles



Adjust the panels, finishes and colors



Add panels and profiles

app

for users and architects

# unique possibilities

M923. panels are available in a range of colors and materials (moss, cork, absorption panels, marker boards, textiles and more). Users can easily change the panels and design the wall themselves. Because the panels are easy to change, it's possible to adjust the appearance of a space very quickly and inexpensively. The myriad options make the M923. ideal for changing up spaces from offices to restaurants to retail with style and ambiance.



# panel finishes and colors

## Frame finishes (powder coated):



Light gray



Green gray



Dark bronze



Black matte

## Backing panels:



Black matte

## Panel finishes (powder coated):



Light gray



Green gray



Dark bronze



Ocean blue



Black matte

## Special finishes:



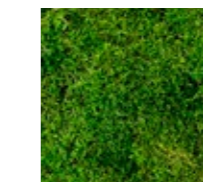
Marker board



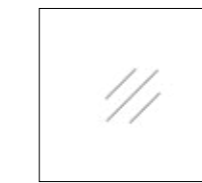
Cork



Reindeermoss



Flat moss



Transparent



Perforated (available in all five powder coating colours)

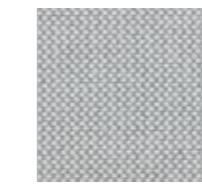
## Textiles:



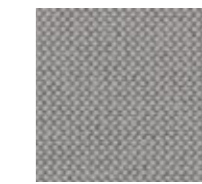
Messenger 046



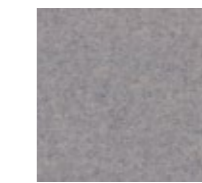
Messenger 079



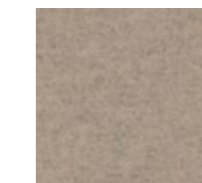
Merit 001



Merit 043



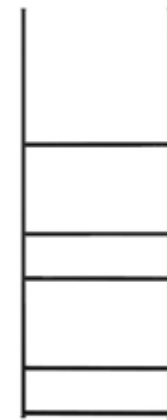
Divina MD 713



Divina MD 213



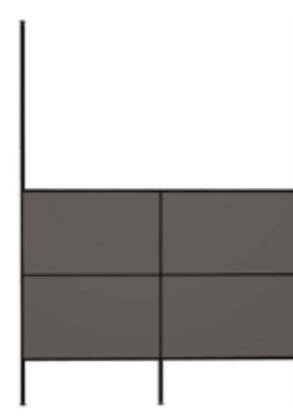
Free-standing configuration



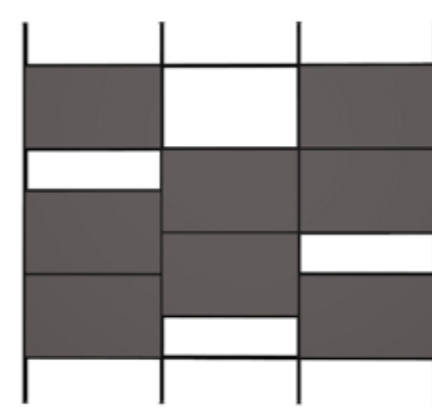
Single module configuration



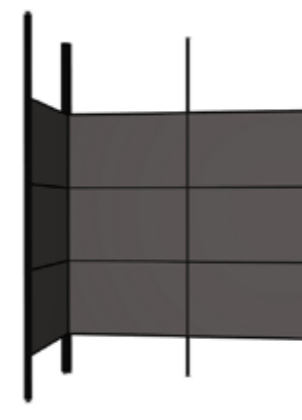
Double module configuration



Double module half height configuration



Triple module configuration



Corner module configuration

M923.



visit [www.maarslivingwalls.com](http://www.maarslivingwalls.com) and learn the possibilities



# download the app

on the App Store or on  
Google Play

## products

Styleline  
Metaline  
String<sup>2</sup>  
Panorama  
Horizon  
laline  
lineacube  
Doors  
Living Options

## expertise

Office  
Care & Cure  
Education  
Revitalisation  
Airport  
Hospitality  
Industrial  
Automotive



**maars** LIVING WALLS®

الجريد  
**AL JURAID**



Newtonweg 1, PO Box 1000  
3840 BA Harderwijk  
The Netherlands

T +31 (0)341 46 52 11  
info@maars.nl  
www.maarslivingwalls.com

Designed in collaboration  
with Gensler as product  
design consultant